



General:

Work Order #: 1703A97-001A

Date: 4/14/2017 11:23:37 AM

Done by:

Test Object:

Name:

Condition (as deliv.):

Part number:

Test lot size:

Lot number:

Drawing number:

Control region:

Ac [cm²]: 1

Vc [cm³]: 1

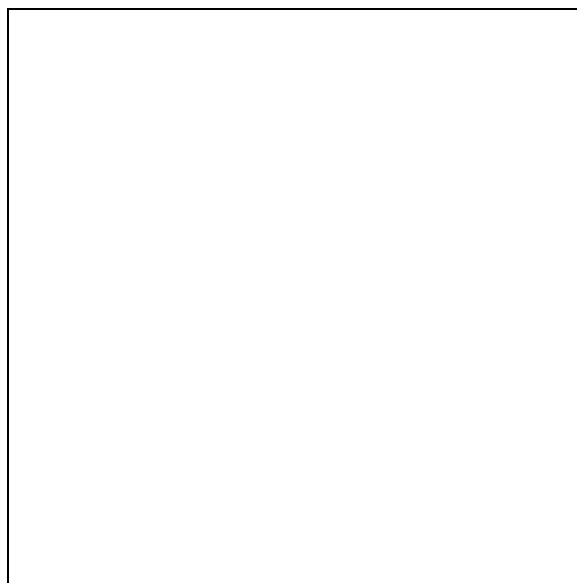
Sampling date:

Sampling time:

Sampling location:

Comments:

As-delivered condition:





Gravimetry:

**Before filtration
[mg]:**

**After filtration
[mg]:**

**Particle mass per
part Gc[mg]:**

Light microscope analysis:

Manufacturer: ZEISS

Particle standard:

Microscope: AxioZoom

**Last inspection
particle standard:**

Software: AxioVision Particle
Analyzer

Software version: AV 4.9.1 SP1 (06-2015)

Reflector:

Objective: REObjective.435281-
9150-000

**Overall magnification
(Ocular):**

**Scale/Magnification
[µm/Pixel]:** 1.00

**Camera
Exposure time [ms]:** 4.00

Lamp intensity[V]:

Luminosity[%]: 54

**Luminosity
[Gray value]:** 137

Threshold range[%]: 67

**Threshold range
[Gray value]:** 92

**Effective diameter
[mm]:** 44.00

Inspection results:

Particle size distribution according the respective categories:

FeretMaximum	B	C	D	E	F	G	H	I	J	K	L	M	N
All particles without Fiber	9177	524	523	156	34	8	9	1	1	0	0	0	0
Metallic	4	1	4	5	1	0	0	0	0	0	0	0	0
Non-metallic	9173	523	519	151	33	8	9	1	1	0	0	0	0
Fiber	0	0	0	3	1	0	1	5	3	2	0	1	0

CCC Codes:

Number

All particles	CCC(N) = B9177/C524/D523/E156/F34/G8/H9/I1/J1/K0/L0/M0/N0
Metallic	CCC(N) = B4/C1/D4/E5/F1/G0/H0/I0/J0/K0/L0/M0/N0
Non-metallic	CCC(N) = B9173/C523/D519/E151/F33/G8/H9/I1/J1/K0/L0/M0/N0
Fiber	CCC(N) = B0/C0/D0/E3/F1/G0/H1/I5/J3/K2/L0/M1/N0

Netted area

All particles	CCC(A) = B24/C20/D20/E18/F16/G13/H14/I10/J10/K00/L00/M00/N00
Metallic	CCC(A) = B12/C10/D12/E13/F10/G00/H00/I00/J00/K00/L00/M00/N00
Non-metallic	CCC(A) = B24/C20/D20/E18/F16/G13/H14/I10/J10/K00/L00/M00/N00
Fiber	CCC(A) = B00/C00/D00/E12/F10/G00/H10/I13/J12/K11/L00/M10/N00

Netted volume

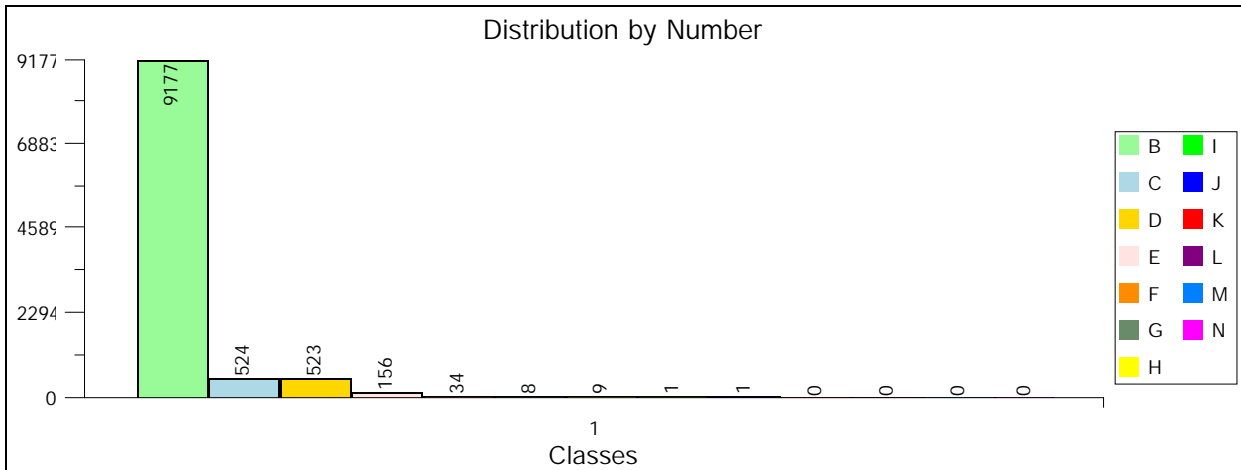
All particles	CCC(V) = B20/C16/D16/E14/F12/G10/H10/I7/J7/K00/L00/M00/N00
Metallic	CCC(V) = B9/C7/D9/E9/F7/G00/H00/I00/J00/K00/L00/M00/N00
Non-metallic	CCC(V) = B20/C16/D16/E14/F12/G10/H10/I7/J7/K00/L00/M00/N00
Fiber	CCC(V) = B00/C00/D00/E9/F7/G00/H7/I9/J9/K8/L00/M7/N00



Inspection results- Charts:

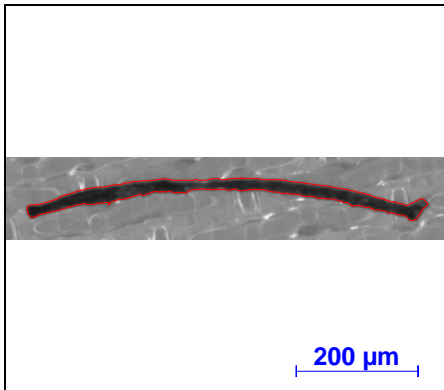
Particle size distribution according the respective categories:

Feretmaximum



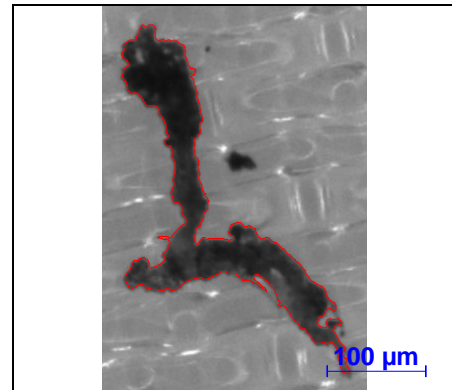
Particle Images

Largest particle:



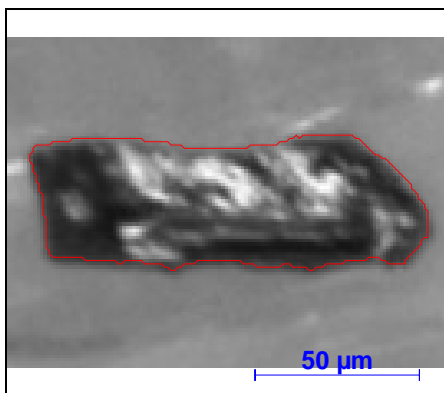
Index: 7162
Particle type: Non-metallic
Feretmax [µm]: 655.07
Feretmin [µm]: 70.21
Particle height [µm]:

Second largest particle:



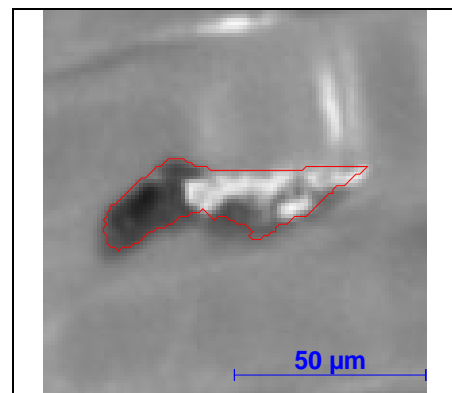
Index: 3736
Particle type: Non-metallic
Feretmax [µm]: 409.76
Feretmin [µm]: 174.35
Particle height [µm]:

Largest metallic particle



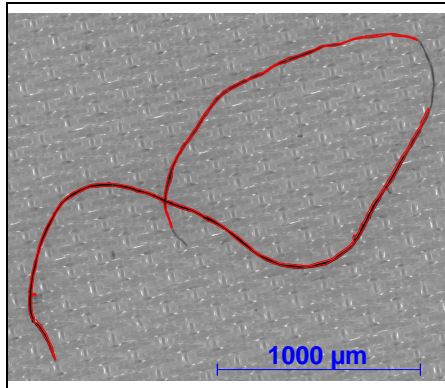
Index: 5796
Particle type: Metallic
Feretmax [µm]: 125.70
Feretmin [µm]: 42.13

Second largest metallic particle:



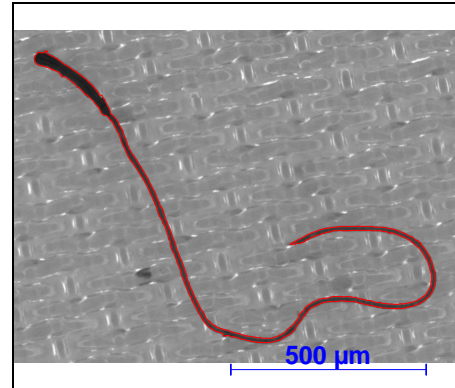
Index: 6338
Particle type: Metallic
Feretmax [µm]: 72.50
Feretmin [µm]: 24.12

Largest fiber:



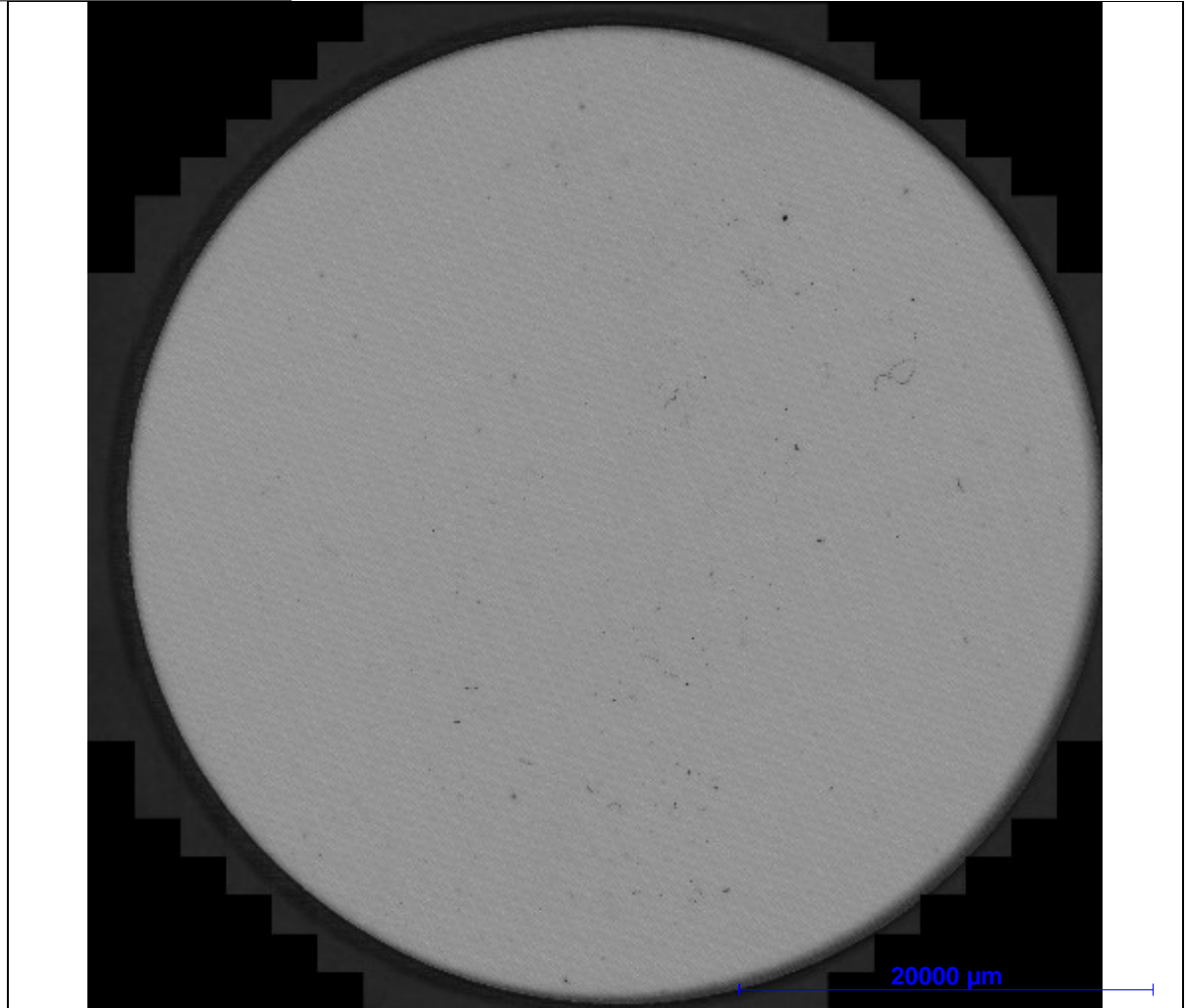
Index: 3047
Fiber length [µm]: 5376
Feretmax [µm]: 2382.96
Feretmin [µm]: 995.64

Second largest fiber:



Index: 1622
Fiber length [µm]: 2105
Feretmax [µm]: 1180.77
Feretmin [µm]: 446.63

Overview Image:



Occupancy rate [%]: 0.08